

InBody®

Body Composition Analysers



InBody 770

Preciseness and reliability of the InBody is proven by the world's top journals and scholars



InBody 770

The InBody 770 is the internationally renowned, 2015 International Forum Design Award winner, for product design and outstanding design quality. With an abundance of measurement outputs the InBody 770 is a premium body composition analyser. Trusted by top hospitals and used for medical research, patient monitoring, sports medicine and sports science. The 770 is InBody Body Composition Analysers top of the range device. As such, it contains all of the features from the other models and plus many more.

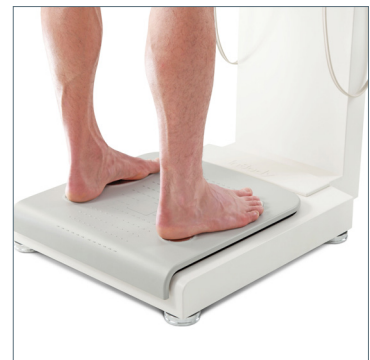
Total body weight alone is not a clear indication of a person's overall health, as it does not distinguish between the amount of fat or lean mass, which the body is fundamentally made up of. This device is a highly effective and precise device which tests and provides in-depth results in less than two minutes.

All InBody models have the patented tetrapolar 8 point tactile electrodes, including the distinct thumb and palm technology. This ensures the reliability of repeat scans.

The InBody 770 utilises 30 impedance measurements by using 6 different frequencies. This shows well over 50 parameters relating to body composition.

Whole Body Phase Angle

Whole body phase angle is an indicator of membrane integrity and water distribution between the intra and extracellular cells. It is an indicator of the health of your cell membrane. Phase Angle is a relatively new concept and has been used in several research cases as a means of assessing cell health.



Developed based on professionals experience

- The InBody 770 can save up to 100,000 results using the member ID feature
- Barcode Reader can be utilised to input member ID
- Easily transfer results in a CSV file to a USB memory stick
- Customised InBody result sheets available with your selected parameters
- Three different kinds of InBody result sheets are available for a more detailed analysis (InBody test result sheet, InBody test result sheet for children and Body Water result sheet)

Universally dominating technology protected by global patents

- World leading technology which provides impedance and reactance values by segment and at multiple frequencies. InBody technology creates a unique stand-alone product that cannot be replicated.

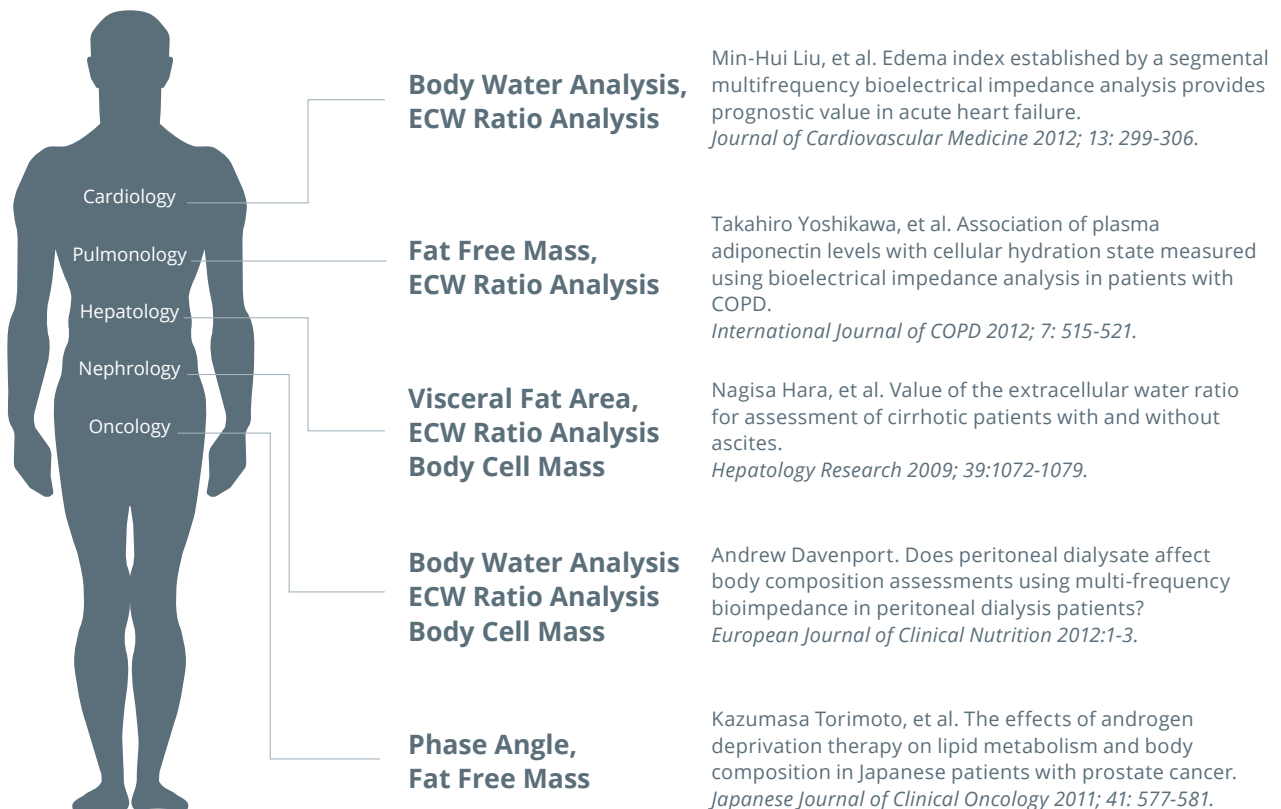
Provides diverse analysis

- Segmental multi-frequency
- Segmental edema (water levels of each limb)
- Visceral Fat Area (VFA) targeted graph which indicates intestinal balance, if unbalanced, can be related to many hazardous lifestyle factors. A brilliant tool to clearly show where the VFA is and ideally should be
- Segmental Lean Analysis shows muscle adequacy of each segment of the body separately
- Whole body phase angle

Outputs And Parameters

- Total Body Water
- Protein
- Soft Lean Mass
- Minerals
- Fat Free Mass
- Body Fat Mass
- Weight
- Skeletal Muscle Mass
- Body Mass Index
- Percent Body Fat
- Segmental Lean Analysis
- Segmental Fat Analysis
- ECW Ratio Analysis
- Segmental ECW Ratio
- Body Composition History
- InBody Score
- Body Type
- Weight Control
- Nutrition Evaluation
- Body Balance Evaluation
- Segmental Body Water Analysis
- Segmental ICW Analysis
- Segmental ECW Analysis
- Segmental Circumference
- Intracellular Water
- Extracellular Water
- Basal Metabolic Rate
- Waist-Hip Ratio
- Waist Circumference
- Visceral Fat Level
- Visceral Fat Area
- Bone Mineral Content
- Body Cell Mass
- Arm Circumference
- Arm Muscle Circumference
- TBW/FFM
- Fat Free Mass Index
- Fat Mass Index
- Skeletal Mass Index
- Recommended Calorie Intake
- Whole Body Phase Angle
- Segmental Phase Angle
- Systolic blood pressure (when connected to BPBIO320 blood pressure monitor)
- Diastolic blood pressure (when connected to BPBIO320 blood pressure monitor)
- Heart rate (when connected to BPBIO320 blood pressure monitor)
- Plus many more

Research level outputs for numerous medical applications



Key Specifications

Bioelectrical impedance analysis (BIA) measurement items	Bioelectrical Impedance (Z) - 30 impedance measurements by using 6 different frequencies (1kHz, 5kHz, 50kHz, 250kHz, 500kHz, 1000kHz) at each of 5 segments (right arm, left arm, trunk, right leg, and left leg) Reactance (Xc) - 15 impedance measurements by using 3 different frequencies (5kHz, 50kHz, 250kHz) at each of 5 segments (right arm, left arm, trunk, right leg, and left leg)
Electrode method	Tetrapolar 8-point tactile electrodes with thumb electrodes
Measurement method	Direct segmental multi-frequency bioelectrical impedance analysis method (DSM-BIA) Simultaneous Multi-frequency Impedance Measurement (SMF-BIA)
Body composition testing method	InBody does not use your age and gender to make assumptions about your body composition measurement.

Feature Specifications

Optional Equipment	Stadiometer from InBody, Blood pressure monitor from InBody
Logo	Customised results sheets available or alternatively name, address and contact information can be shown on the InBody Results Sheet
Displaying Method	LCD monitor, data management software Lookin' Body120
Type of result sheet	InBody test result sheet, InBody test result sheet for children, body water result sheet
Voice Guidance	Provides audible indication for test in progress, test complete, and successfully saved settings changes.
Database	Test results can be saved if the member ID is utilised. Up to 100,000 results can be saved.
Administrator Menu	Setup: Configure settings and manage data Troubleshooting: Additional information to help use the InBody770
USB Thumb drive	Copy the InBody770 data (can be viewed on Excel or Lookin'Body data management software), backup, or restore the InBody770 data
Barcode Reader	The member ID will be automatically inputted when the barcode ID is scanned
Backup data	Backup data saved in the InBody by using a USB Thumb Drive, restore results on the InBody from a backup file

Other Specifications

Display Type	800 × 480 10.2inch Color TFT LCD
Internal Interface	Touchscreen, Keypad
External Interface	RS-232C 4EA, USB HOST 2EA, USB SLAVE 1EA, LAN (10T) 1EA, Bluetooth 1EA, Wi-Fi 1EA
Compatible Printer	Compatible printer included
Dimension	526 (W) × 854 (L) × 1175 (H): mm
Equipment Weight	38kg
Testing Time	About 60 seconds
Operation Environment	10 - 40°C
Storage Environment	-10 - 70°C
Testing Weight Range	10 ~ 270kg
Height Range	95 - 220cm (3ft. 1.4in. ~ 7ft. 2.61in.)



InBody App

Get your InBody test delivered straight to your mobile.

- ✓ Monitor your body's status on the go with your InBody data delivered right to your mobile device.
- ✓ Track your scan history and visualise progressing towards your goals.
- ✓ Connect with friends and family. Keep each other in check and on track.
- ✓ Stay connected with your trainer, keeping you on track and motivated.

Get the FREE InBody App





Cloud Database Management

Lookin'Body Web

Manage all of your member's InBody data from any computer anytime, anywhere.

- ✓ Track client progress
- ✓ Set target goals
- ✓ Access client history
- ✓ Connect with clients and keep notes

Powerful Analytics

Analytics takes the guesswork out. Running a fitness challenge and need to award a winner? Use the data in Lookin'Body Web to easily identify member's who have gained the most lean muscle mass and lost the most body fat.

1 year subscription included with all machine purchases

InBody Mobile App (Available Free from the App Store)

Stay connected with your clients, keeping them on track and motivated. Through the use of our mobile app, your clients can keep track of their goals and monitor their progress.

Result Sheet



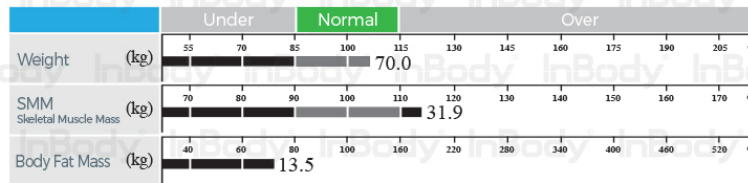
[InBody770]

ID	Height 175cm	Age 27	Gender Female	Test Date / Time 05.09.2017 / 10:55
----	-----------------	-----------	------------------	--

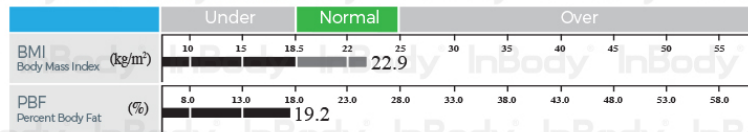
BODY COMPOSITION ANALYSIS

	Values	Total Body Water	Soft Lean Mass	Fat Free Mass	Weight
Total Body Water (L)	41.2 (32.8-40.0)	41.2	53.1 (42.0-51.4)	56.5 (44.6-54.5)	70.0 (54.7-73.9)
Protein (kg)	11.2 (8.8-10.8)	non-ossseous			
Minerals (kg)	4.08 (3.03-3.71)				
Body Fat Mass (kg)	13.5 (12.9-20.6)				

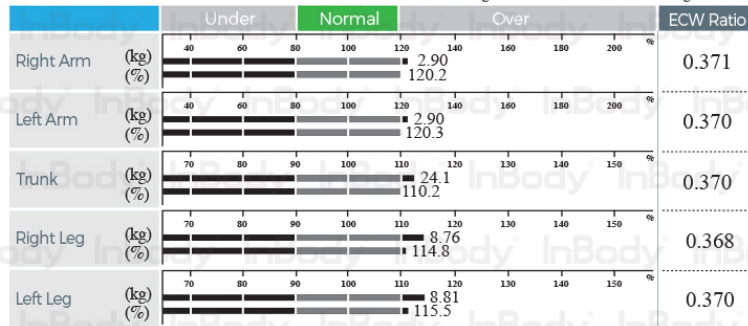
MUSCLE-FAT ANALYSIS



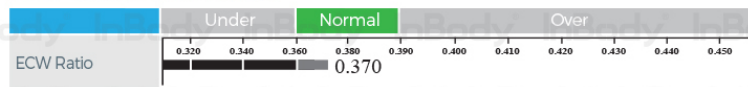
CALCULATED ANALYSIS



SEGMENTAL LEAN ANALYSIS



ECW RATIO ANALYSIS



BODY COMPOSITION HISTORY

Parameter	Value
Weight	70.0
SMM (kg)	31.9
PBF (%)	19.2
ECW Ratio	0.370

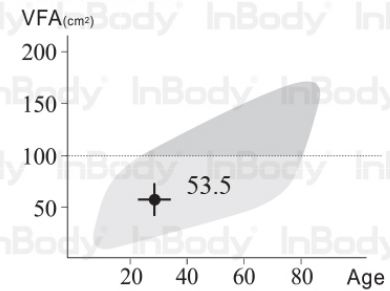
Recent Total 05.09.17 10:05

InBody Score

87 / 100 Points

* Total score that reflects the evaluation of body composition. A muscular person may score over 100 points.

Visceral Fat Area



Weight Control

Target Weight 70.0 kg
 Weight Control 0.0 kg
 Fat Control 0.0 kg
 Muscle Control 0.0 kg

Segmental Fat Analysis

Right Arm (0.7 kg) 68.2%
 Left Arm (0.7 kg) 67.5%
 Trunk (6.8 kg) 112.6%
 Right Leg (2.1 kg) 75.8%
 Left Leg (2.1 kg) 75.8%

Research Parameters

Intracellular Water 26.0 L (20.3~24.9)
 Extracellular Water 15.2 L (12.4~15.2)
 Basal Metabolic Rate 1591 kcal
 Waist-Hip Ratio 0.84 (0.75~0.85)
 Bone Mineral Content 3.43 kg (2.49~3.05)
 Body Cell Mass 37.2 kg (29.1~35.5)
 Arm Circumference 30.4 cm
 Arm Muscle Circumference 27.1 cm

Whole Body Phase Angle

6.3°
 RA LA TR RL LL
 ϕ(°)50kHz| 5.8 5.8 9.2 6.7 6.7

Impedance

Z(Ω)	RA	LA	TR	RL	LL
1kHz	400.8	399.7	27.0	315.5	308.0
5kHz	391.6	390.9	26.1	307.4	300.5
50kHz	343.4	343.1	22.1	265.3	260.4
500kHz	296.9	296.1	16.1	229.0	223.9
1000kHz	289.7	288.6	14.1	225.5	219.8

Device Comparison



InBody 770
6 Frequencies
1, 5, 50, 250, 500, 1000



InBody 570
3 Frequencies
5, 50, 500



InBody 270
2 Frequencies
20, 100

Frequency (kHz)

Result Sheet Outputs

	InBody 770	InBody 570	InBody 270
Total Body Water	✓	✓	✓
Protein	✓	✓	✓
Soft Lean Mass	✓	✓	
Minerals	✓	✓	✓
Fat Free Mass	✓	✓	✓
Body Fat Mass	✓	✓	✓
Weight	✓	✓	✓
Skeletal Muscle Mass	✓	✓	✓
Body Mass Index	✓	✓	✓
Percent Body Fat	✓	✓	✓
Segmental Lean Analysis	✓	✓	✓
Segmental Fat Analysis	✓	✓	✓
ECW Ratio Analysis	✓	✓	
Segmental ECW Ratio	✓	✓	
Body Composition History	✓	✓	✓
InBody Score	✓	✓	✓
Body Type	✓	✓	
Weight Control	✓	✓	✓
Nutrition Evaluation	✓	✓	✓
Body Balance Evaluation	✓	✓	✓
Segmental Body Water Analysis	✓		
Segmental ICW Analysis	✓		
Segmental ECW Analysis	✓		
Segmental Circumference	✓	✓	
Intracellular Water	✓	✓	
Extracellular Water	✓	✓	
Basal Metabolic Rate	✓	✓	✓
Waist-Hip Ratio	✓	✓	✓
Waist Circumference	✓	✓	✓
Visceral Fat Level	✓	✓	✓
Visceral Fat Area	✓		
Bone Mineral Content	✓	✓	
Body Cell Mass	✓	✓	
Arm Circumference	✓	✓	
Arm Muscle Circumference	✓	✓	
TBW/FFM	✓		
Fat Free Mass Index	✓		
Fat Mass Index	✓		
Skeletal Mass Index	✓	✓	✓
Recommended Calorie Intake	✓	✓	✓
Whole Body Phase Angle	✓		
Segmental Phase Angle	✓		

BSM370 Stadiometer

The BSM370 Stadiometer is a precise height measuring device. Featuring, an ergonomically designed touch bar and precise measurement sensor. This automatically measure the user's height while standing on the scale.

Automatic portable stadiometer

- Measures height, weight, and BMI
- Connect via RS32 cable to all InBody devices to allow precise height measurement via automatic data transfer
- A lightweight 14kg allows for easy portability
- Features two smooth-gliding wheels for effortless mobility, both indoors and out
- Easily moved in it's ready-to-use position or folded into a convenient space saving unit that will fit in tight spaces
- This BSM370 Stadiometer can be integrated with other InBody devices providing the complete InBody package



Specifications

Measurement Item	Height, Weight, BMI
Connectivity	RS32 cable
Height Range	90 ~ 200cm (2ft. 11.4in. ~ 6ft. 6.7in.)
Weight Range	2 ~ 250kg
Dimension when touch bar is down:	380(W) × 510(L) × 1350(H): mm
Dimension when touch bar is up:	380(W) × 510(L) × 2126(H): mm
Machine Weight	15.5kg
Machine Operation	Automatic
Measurement Duration	Weight, Height Measurement: 7 sec., Weight Measurement: 2 sec., Height Measurement: 5 sec. (standby time 2 sec.)
Operation Environment	10 ~ 40(50 ~ 104), 30 ~ 75%RH, 70 ~ 106kPa
Storage Environment	-20 ~ 70(-4 ~ 158), 10 ~ 95%RH, 50 ~ 106kPa (No condensation)

BPBIO320 Blood Pressure Monitor

The BPBIO320 fully automated blood pressure monitor provides a highly effective and easy way of measuring blood pressure. It can be a stand-alone product or in connection with your InBody device. It provides a simple single step measurement with voice guidance and specific elbow point positioning. This allows the best test posture possible. For clinical and non-clinical environments, the BPBIO320 delivers.

- 1 Flexible cuff guide ring that allows for accurate measurement of larger arm sizes (18 ~ 42cm)
- 2 Comfortable and painless measurement with the air pouch insulation and the cuff
- 3 Biotechnological design that ensures the right posture
- 4 Wide LED screen for easy checking of all results (systolic, diastolic, and pulse rate), LED light guides the process of measurement and indicates current time
- 5 One-touch check for reviewing and printing past results
- 6 'Print' button for an easier test. Larger buttons for easier recognition
- 7 High-speed thermal printer with automatic cutter for a clean and quick printing. Two different printing options available
- 8 Emergency closing during measuring process if necessary



Specifications

Measurement Method	Oscillometric
Measurement Range	Pressure: 0 ~ 300mmHg (±2mmHg)
Pulse	30 ~ 240bpm (±2%)
Pressurizing Method	Automatic pressurization by pressure controller micro pump
Depressurizing Method	Exhaust by micro valve
Cuff	Pressurizing belt method by gear motor, Automatic operation
Display Type	7-Segment LED(Systolic, Diastolic, Time, Pulse)
Database	Can save up to 1,000,000 results
Energy Saving	Automatically converts to energy saving mode 2 minutes after the last measurement is taken
Dual Safety System	[START/STOP] button: the cuff will become loose and deflate * If the air pressure surpasses 300mmHg, the cuff will automatically deflate and loosen. [EMERGENCY] button: the cuff will become loose for deflation regardless of the main controller.
Voice Guidance	Provides audible indication for test in progress, test complete, and successfully saved settings changes.
External Interface	RS232C (USB compatibility when using USB cable)
Dimension	489(W) × 450(L) × 284(H): mm
Weight	9kg
Operation Environment	10 ~ 40°C, 30 ~ 75%RH, 70 ~ 106kPa
Storage Environment	-10 ~ 70°C, 10 ~ 80%RH, 50 ~ 106kPa (No condensation)

Blood Pressure Monitor **\$3,145 + GST**

InBody 770 Device Package



Package Inclusions

This package includes the items pictured here, plus the following items:

Consumables

- 500 x Result Sheets ✓
- 500 x InBody Tissues ✓
- 500 x Interpretation Guides ✓

Training



InBody Operator Course.
A requirement to commence warranty on your InBody device.

Data Management Software

Lookin'Body Web (1 year subscription)



InBody 770 Package **\$34,900 + GST**
+ Postage & handling

InBody Academy

This one day intensive training course will cover:

- ✓ InBody's patented technology
- ✓ How to set up and use your InBody
- ✓ Interpretation of an InBody scan
- ✓ Business & Marketing tips
- ✓ Plus, much more.

Location: Gold Coast Showroom
Online Training

Creating Excellence in Body Composition



InBody® Body Composition Analysers



InBody®

Body Composition Analysers

Get the InBody App



InBody is a total healthcare device manufacturer that has acquired over 80 patent rights across the globe.



Copyright © 2018 InBody Body Composition Analysers PTY LTD. All rights reserved. Version IB770-0420

39 Hillcrest Pde
Miami QLD 4220

0437 555 311

info@inbody.net.au

www.inbody.net.au